

PRESENTED BY
THE GREATER VICTORIA CYCLING COALITION
AND BIKE TO WORK SOCIETY



THE FIRST-EVER
NEIGHBOURHOOD
SCAVENGER
HUNT

MAY - AUGUST 2020

JAMES BAY

gvcc.bc.ca/theme-rides/



GREATER VICTORIA
CYCLING
COALITION

GREATER VICTORIA
BIKE  WORK
SOCIETY



About this

May - August 2020

NEIGHBOURHOOD SCAVENGER HUNT

Welcome All Scavenger Hunters!

Have you read every book in the house? Watched all the episodes of your favourite TV shows? Looked at your bicycle and wished you could go on an adventure? Well, we've got a fun-filled neighbourhood scavenger hunt just for you!

The Greater Victoria Cycling Coalition and Bike to Work Society are offering a series of Scavenger Hunts, Discovery Rides, and Ride-the-Distance Rides for neighbourhoods across the Greater Victoria region. These activity series will be happening from May to August 2020. Every two weeks, two new scavenger hunts challenges will be released for two new neighbourhoods. The James Bay Scavenger Hunt will be released on Monday, July 20th. Story entries will be due two week later on August 4th. These neighbourhood challenges are designed for all-ages and aim to bring some competitive fun and exploration into your life!

How to play the game:

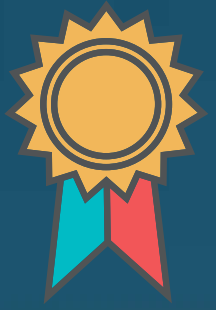
Explore these clues, and submit a photo, story, or video to us about your experience or something you discovered on this Scavenger Hunt challenge. **Submissions can be sent to us by filling out the short activity form on the GVCC website under 'themed rides' or via Facebook and Instagram by tagging us at @biketoworkvic or #yyjbike!** With every submission, you will be entered into a draw for a chance to win a gift card for take-out food from a local restaurant or bike shop near you. Prize winners for this James Bay challenge will be drawn on August 4th.

Why ride right now?

Studies have shown that cycling helps to reduce stress, boost the immune system, and stay physically active. Cycling is also an excellent way to get to know your neighbourhood during this time while practicing physical-distancing.



GREATER VICTORIA
**CYCLING
COALITION**



Clues

1. Designed by artist, Dale Doebert and constructed by City of Victoria staff in 2015, what is the name of the 35-foot-long sculpture that lies on the edge of Beacon Hill Park?
2. Long before European settlers arrived on Lekwungen Territory, the hill along Dallas Road in Beacon Hill Park has been known as “Meeacan,” which according to Lekwungen Songhees Elder, Jimmy Fraser, means “warmed by the sun.” Ride up to the flagpole, and find the Lekwungen place name marker there.
3. This Mile Zero monument is the starting marker for an 8,000km Trans-Canada Highway that spans the entire length of the country. This place is also home to a statue of what national hero who ran across the country to raise money for cancer research?
4. To honour the traditions and history of the Salish Nations, The Land and Sea Mural was installed along the Breakwater in 2009. Artists Butch Dick, Songhees carver and Darlene Gait, Esquimalt artist, designed the mural, and served as mentors to a group of young artists who carried out the work of painting the mural.
5. “This hall opened in 1910, constructed by Polish immigrants and craftsmen. Until 1945, there were only a few Polish families living in Victoria. However, following WWII, a wave of Polish immigrants arrived from Europe.” Find the name of this hall.
6. Just around the corner from the hall mentioned in the previous clue, is the Victoria Edelweiss Club. This clubhouse was founded in 1970 to preserve the cultural practices of which European immigrants of the Victoria area? Hint: The architectural design style of this building is Bavarian.
7. Located in Irving Park, is a plaque commemorating the first Black person to be elected and serve on Victoria’s City Council in 1866 to 1869. What is the name of this individual?

Clues

8. The history of which Wharf is not unlike many of the floating camps of loggers that emerged along the BC's coast in 1800s? Historically, these float homes emerged in response to the need for affordable housing among waterfront labourers.
9. Located on 642 Simcoe Street is Emily Carr's Hill House, also now known as the House of All Sorts. Emily Carr lived in James Bay almost all her life and became a world-renowned artist, author and teacher. What colour are the staircases to this house?
10. Tucked away in the heart of James Bay is a Rock Art Garden created by Maryam Barker. This little front-yard rock garden is likely unlike any rock garden you've seen, complete with rocks painted to look like a realistic picnic or tea party spread. Ride over to this garden on Niagra Street (just up from Government Street) and feast your eyes on this creative rock display.

Bonus: During the week of July 27th the Tour de Victoria is holding its own Scavenger Hunt asking participants to find as many pink arrows along the TdV route as they can. For a bonus, find one of these pink arrows! Instructions can be found at the link below when the challenge launches July 27th.

<https://tourdevictoria.com/ridelocal/>



Reminder: These activities are taking place on the unceded territories of the Lekwungen and WSÁNEĆ Nations.

Activities are designed with adult supervision in mind. Before undertaking any outdoor activities, please be sure to follow the latest COVID-19 Provincial Support and Information.